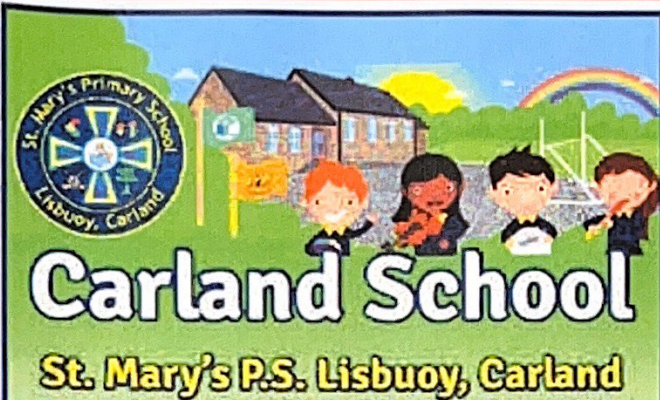
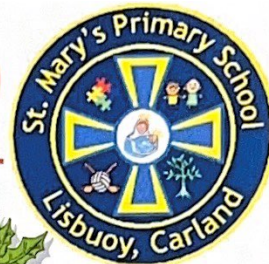


St. Mary's Primary School

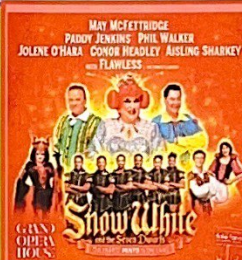


Merry Christmas

Children will return to school on
Monday 8th January 2024

OPEN DAY

A big thank you to everyone who came along to our recent Open Day. A special mention to our staff, pupils, governors and members of the PSG, Diane & Janet. Enrolment opens on EA website on 9th January @ 12noon and closes on 26th January at 12 noon. If you know of anyone who was unable to attend Open Day please ask them to contact school to arrange a visit. Thank you!



Our annual trip to the Pantomime will take place on Thursday 14th December. Pupils and family members are asked to meet at the Gables Restaurant at 11.30am. Please park at the back of the Gables car park to accommodate customer parking. We will return to the Gables at 5.15pm approximately. **All children are to wear full school uniform.** Pupils should eat a light lunch before leaving home. **(Please remember NO foods with Nuts or traces of Nuts)** Many thanks!



Please make sure you have downloaded the '**Schools NI' App** to receive alerts when messages and letters are posted on the website.

Keep up to date with school news by checking the website & Facebook Page regularly.
www.stmarylisbuoy.com



www.facebook.com/stmarylisbuoy.com

School Christmas Show

The schools' Annual Christmas Show will take place on Wednesday 13th December at 10.00am & 7.00pm. All pupils will go home at 2.00pm on this day. Pupils are asked to be back in school by 6.30pm. Refreshments will be served from this time. This year P1-2 pupils will present the Nativity 'The Sleepy Shepherd' then P3-4 pupils will perform 'Ned's Christmas Discovery' followed by a short interval. The finale 'Cinderella Rockerfella' will be performed by P5-7 pupils. Admission £5; Tickets available from the office. There will be a Christmas raffle on the night. All proceeds towards school funds. Please come along for an enjoyable evening's entertainment.



Adverse Weather Conditions

Due to the possibility of adverse weather over the next few months we have a policy in place to deal with this. If the school is unable to open due to these conditions, parents will be notified in the following ways

- Text Messaging Service (Please notify the school if your mobile number changes)
- Website/Facebook



Weather Wear

As the colder, wetter weather draws in, please ensure your child wears suitable clothing & footwear to school, ie warm, waterproof coat (preferably with a hood); hat; gloves, & scarf. Steff try to get the children outside everyday at breaktime & lunchtime, irrespective of the weather!! Thank you!



The Giving Machine

Please remember to use the Giving Machine, if you are purchasing items online. Every time you buy online you will generate free cash donations for St. Mary's

Many thanks in advance!

Could we please ask that

- everyone remains patient while in the queue of traffic in the mornings and evenings. We know it is not ideal but it is the best system to keep our children safe.
- visitors & parents report to the office and do not go directly to the classrooms, for Safeguarding & Child protection reasons.
- parents give brief details for requesting a meeting with or phone call from staff, to allow the teachers to respond appropriately.



If you only believe half of what your child tells you about school, we'll only believe half of what they tell us about home.



Safeguarding Team



Pictured above are: Mrs Marie McQuaid, Designated Governor for Safeguarding & Child Protection; Mr Raymond Stewart, Chairman of Governors

Sickness in School

Should your child feel unwell in school, we will contact you to let you know and, if necessary, arrange for collection. It is therefore vitally important that the school has up-to-date contact details for parents— as well as a contact number in case of Emergency. Please contact Majella in the school office if your details change. It is also the policy of our school to make contact with parents should your child receive a bump to the head. It is then left to parents' own discretion whether the child stays in school or is taken home. If your child feels unwell in the morning, before school, please keep them at home!!

WHAT IS CONCUSSION?

A concussion is a brain injury which is usually caused by hitting your head or a fall. Concussions must be taken seriously. It is important to be able to recognise the signs and know how to respond.

SPOT THE SIGNS

If your child has been hit on the head or fallen, you need to look out for signs like these:

- A headache
- Feeling dazed or confused
- Feeling drowsy or sleepy
- Feeling sick
- Feeling 'irritable' or 'in a fog'
- Having difficulty remembering things
- Any other change in normal behaviour

Concussion does not always involve losing consciousness; you must take any of these symptoms seriously.

Parents are asked to ensure that their child's name is clearly marked on all school uniform, coats, lunch boxes, water bottles and P.E. clothing. Your co-operation is greatly appreciated.